

**Registration  
begins  
Monday,  
Nov. 17**



## **Event Highlights:**

Storytime with Santa & Friends  
Winter Reading Kickoff Party  
Deck the Halls Walk-In Craft  
Winter Wonderland Teen Lock-In  
Tea Tasting 101

**Program Guide | For Children, Teens & Adults**



## PRESENTING SPONSORS



# WINTER READING CHALLENGE

Mishawaka-Penn-Harris Public Library

## January 2 – March 2

**Beginning Monday,  
December 15**  
**Visit any MPHPL location  
to pick up a Winter  
Reading Challenge card or  
download a card online.**



**Visit our website at [mphpl.org/reading-challenge](http://mphpl.org/reading-challenge) for more details.**





Starting Thursday,  
**January 2**  
Mark a square for each  
activity you complete.



Complete all five squares marked with the  and bring your card to a service desk for a prize.



Complete the entire challenge and return it  
for a **NEW BOOK** of your choice\*!

\* Prize redemption begins Mon., Jan. 5. Limit one challenge card per person.  
Adult participants must be MPHPL cardholders. Prizes can be selected from any age group  
(to restrict prize choice, adult must accompany youth). Prize options subject to change.

## A big THANK YOU to our sponsors:



**CROWN  
TROPHY**  
MISHAWAKA  
[www.crowntrophy.com/store-93](http://www.crowntrophy.com/store-93)



**DLZ**  
ARCHITECTURE • ENGINEERING • PLANNING  
SURVEYING • CONSTRUCTION SERVICES



*THE ROBERT HENRY  
CORPORATION*

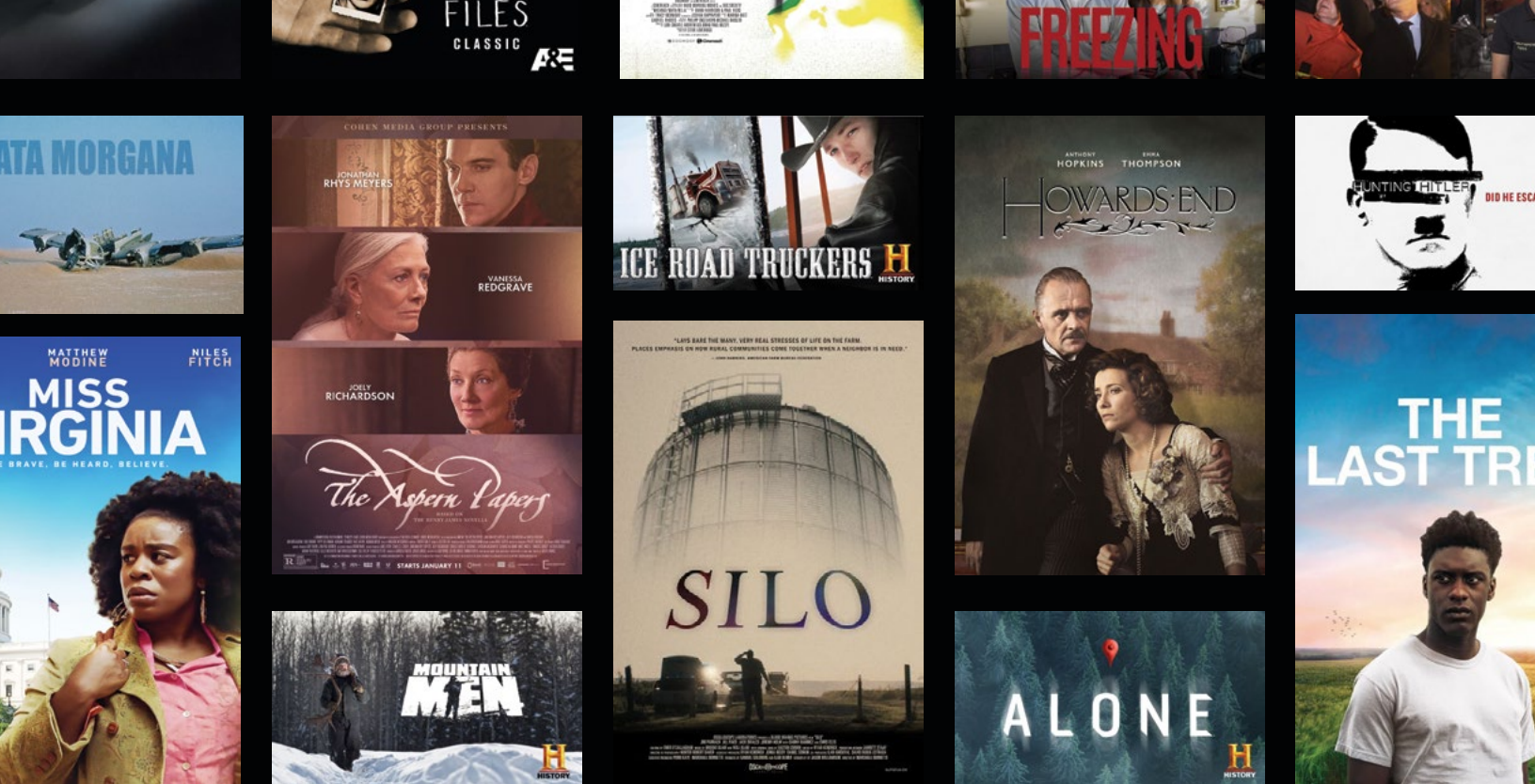
**D.A. Dodd, LLC • HUB International • Notre Dame Federal Credit Union  
US Signcrafters, Inc. • Zolman's Tire & Auto Care**

**Brown & Brown General Contractors, Inc. • Electromedia • INSERTV**

**Kona Ice of Michiana • KSS Enterprises • Paddyshack Ice Cream**

**Precision Wood Products • Shambaugh & Son, L.P. • Tobin Landscaping**





# What will you WATCH?

## kanopy

Films that matter

Start watching at  
[mphpl.kanopy.com](http://mphpl.kanopy.com)

Free with your  
library card





# Program Guide Contents

Winter Reading Challenge .....	2
Family and All Ages Programs Part 1 .....	6
Family and All Ages Programs Part 2 .....	7
Winter Reading Challenge Kickoff Party .....	8
Children's Programs Part 1.....	9
Children's Programs Part 2.....	10
Storytime.....	11
1000 Books Before Kindergarten .....	12
Teen Programs Part 1 .....	13
Teen Programs Part 2 .....	14
Adult Programs Part 1.....	15
Adult Programs Part 2.....	16
Library Card Information .....	17
Locations, Hours, & Social Media .....	18

## Our Mission

The Mishawaka-Penn-Harris Public Library inspires and empowers our community by connecting patrons to literature, information, ideas and new experiences for lifelong enrichment.





## Mishawaka High School Jazz Ensemble Holiday Performance

**Mishawaka Library**  
**Thursday, December 4**  
**6:30–7:30 p.m. | Family & All Ages**

Listen to the sounds of the season with the Mishawaka High School Jazz Ensemble!

Adult caregivers must directly supervise participants 9 years of age and younger; caregivers must remain on the premises for participants 10-11 years of age.

**No registration required**

**mphpl**   
**in the**  
**Community**

  
**UNIVERSITY PARK MALL**  
A SIMON MALL

## Storytime with Santa & Friends

**University Park Mall**  
**6501 Grape Road, Mishawaka**  
**Monday, December 8 | 11 a.m.–Noon**  
**Family & All Ages**

Join us at the mall for a special Storytime with Santa and friends! This event is free - just bring your little ones and enjoy!

**No registration required**



## Mush with Sophia, the Sled Dog!

**Mishawaka Library**  
**Saturday, December 6**  
**1:30–2:30 p.m. | Family & All Ages**

Discover the world of dog sledding ... running behind a team of dogs, steering through mountain terrain and crossing the Alaskan tundra. Karen Land (a three-time musher in the 1,000-mile Iditarod Trail Sled Dog Race) and Sophia (an Alaskan husky) will delight us with “tails” of adventure.

Adult caregivers must directly supervise participants 9 years of age and younger; caregivers must remain on the premises for participants 10-11 years of age.

**No registration required**





# Happy NOON YEAR

**Happy Noon Year**  
**Mishawaka Library**  
**Tuesday, December 30**  
**11:30 a.m.-12:30 p.m.**  
**Family & All Ages**

Ring in the "Noon" Year with games, crafts and a snack as we countdown to noon! Adult caregivers must remain in the room.

**No registration required**

**Snack, Craft and Puzzle**  
**Mishawaka Library**  
**Saturday, January 24**  
**10-11:30 a.m.**  
**Family & All Ages**

Celebrate national puzzle month with snacks, puzzles and puzzle-themed crafts.

**No registration required**

# SNACK, CRAFT AND PUZZLE

**Holiday Family Trivia Night**  
**Mishawaka Library**  
**Monday, December 8**  
**5:30-6:30 p.m.**  
**Family & All Ages**

Join us for a fun evening of festive family-friendly trivia covering movies, music, food, traditions and more! Teams require 2-6 members. Adult caregivers must remain in the room.

**Registration required**

**Winter Wonderfest**  
**Harris Branch**  
**Tuesday, December 16**  
**4:30-7 p.m.**  
**Family & All Ages**

Join us for crafts (great for gift-giving), games, a family photo, snowball fight and balloons by Mr. Derek! Enjoy a free small hot chocolate from our friends at Tom's Travelin' Coffee and look for a special performance by our friends from the South Bend Civic Theatre.

**No registration required**

# WiNTER Wanderfest



**WINTER  
READING  
CHALLENGE**  
Mishawaka-Penn-Harris Public Library

SPONSORED BY



# KICKOFF PARTY

Mishawaka Library  
Friday, January 2 | 10 a.m.–Noon  
Family & All Ages

Help us kick off our  
**2026 Winter  
Reading Challenge!**

**WINTER  
GAMES**

**CRAFTS**

**Roz  
Puppets**

Fun, Furry, and Unforgettable!

PRESENTS

**WINTER  
SILLY BITS**

10:30–11:30 a.m.

**SNACKS**

**No registration required**

Adult caregivers must directly supervise participants 9 years of age and younger;  
caregivers must remain on the premises for participants 10–11 years of age.





## Shapes and Scribbles

Mishawaka Library  
Tuesday, December 9  
Harris Branch

Wednesday, December 10  
10:15–11 a.m. | Age 5 & Under



Preparing your child to read includes reading, writing, talking, singing and playing. Little ones will practice these and other creative skills by exploring the wonderful world of shape and color! Adult caregivers must remain in the room.

No registration required



## Homeschool Hangout

Mishawaka Library  
Wednesdays: December 17  
& January 21  
1–1:45 p.m. | Grades K–5



Learn about new topics with hands-on activities. Supplies will be provided. Adult caregivers must remain in the library.

**December 17:** History of the Movies

**January 21:** Antarctica & the Arctic Circle

Registration required for each session



SOUTH  
BEND

# CIVIC

THEATRE

**South Bend**  
**Civic Theatre Presents:**  
**Mo Willems – Act the Story**  
Mishawaka Library  
Saturday, December 13  
10:30–11:30 a.m. | Grades K–5

Would YOU let the pigeon drive the bus? Join us as we dive into the beloved literary characters of Mo Willems and build reading comprehension, memorization skills and stage presence. Students will focus on voice and movement through mask work, imaginative play and story dramatization. **WARNING:** This program could contain too much laughter! Adult caregivers must remain in the library.

Registration required



# DECK THE HALLS

## WALK-IN CRAFT

**Deck the Halls**  
**Walk-In Craft**  
All Locations  
Monday, December 22  
During Library Hours  
Age 11 & Under

‘Tis the season for festive crafts! Visit the Youth Services desk to choose your craft. Adult caregivers must directly supervise participants 9 years of age and younger; caregivers must remain on the premises for participants 10–11 years of age.

No registration required



## Painting Pals

Mishawaka Library

Wednesday, January 14

4:30–5:30 p.m. | Grades K–2

Learn basic painting skills while creating your own unique masterpiece using dots! Adult caregivers must remain in the library.

**Registration required**

Gr.  
K–2



## Painting Pals

Mishawaka Library

Thursday, January 15

4:30–5:30 p.m. | Grades 3–5

Learn basic painting skills while creating your own unique masterpiece using dots! Adult caregivers must remain in the library.

**Registration required**

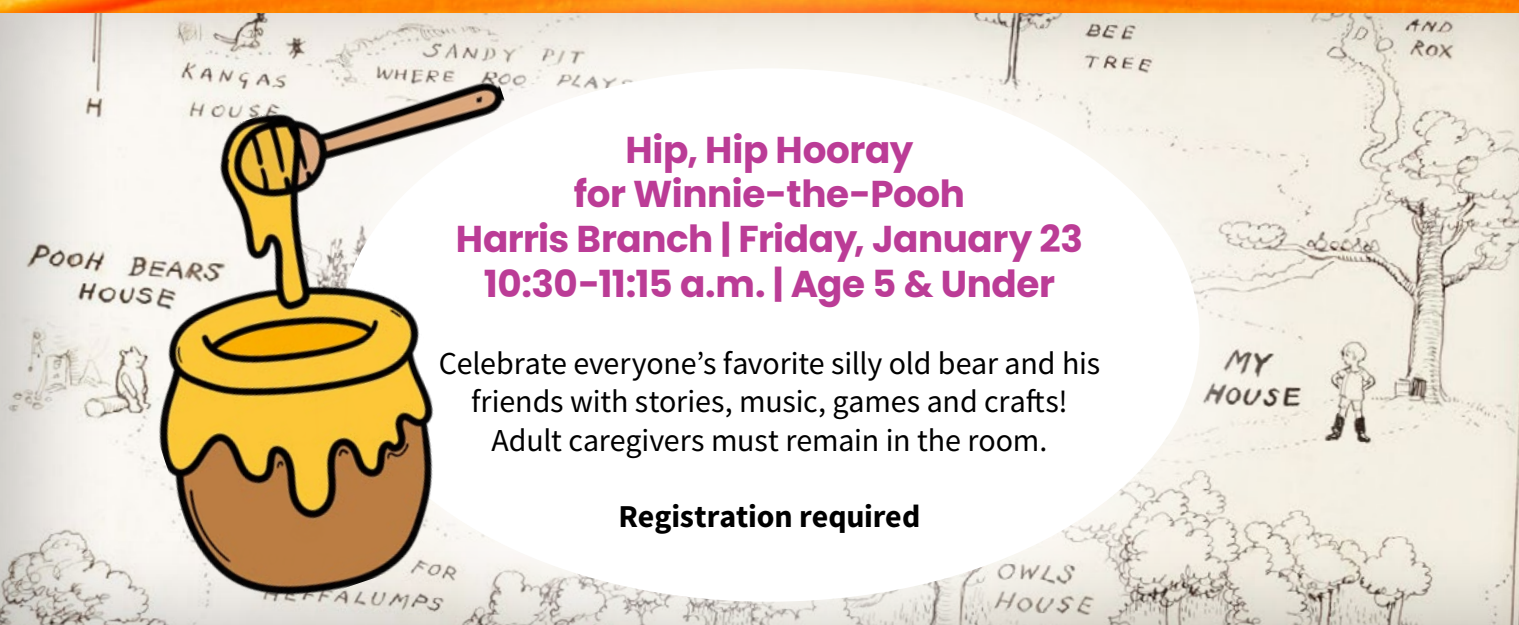
Gr.  
3–5

## Hip, Hip Hooray for Winnie-the-Pooh

Harris Branch | Friday, January 23  
10:30–11:15 a.m. | Age 5 & Under

Celebrate everyone's favorite silly old bear and his friends with stories, music, games and crafts! Adult caregivers must remain in the room.

**Registration required**



200

BOOKS  
BEFORE

Middle  
School

This year-round reading program is intended for elementary-aged children in grades K–5.



To participate, visit a Youth Services desk or our website

[mphpl.org/200Books](http://mphpl.org/200Books)

MILESTONE ACHIEVEMENTS:

### 25 BOOKS

- Reece
- Zeke
- Lincoln
- Holden H.
- Connor O.
- Alex P.
- Amira W.
- Grace H.

### 50 BOOKS

- Lilly F.
- Marshall F.

### 125 BOOKS

- Judah G.



# Storytime

Storytime

## Bouncin' Babies Birth–23 Months

A structured program that combines books, short rhymes, songs, fingerplays and movement activities to introduce children to the wonder of language.



## Li'l Listeners Ages 2–5

A structured program in which books, story-related activities and crafts provide an enjoyable group experience.



## Attend a Storytime Program

**Mishawaka Library**  
**Tuesdays:**  
**Jan. 6, 13, 20 & 27**  
**10:15–10:45 a.m.**

**Harris Branch**  
**Wednesdays:**  
**Jan. 7, 14, 21 & 28**  
**10:15–10:45 a.m.**

**Bittersweet Branch\***  
**Thursdays:**  
**Jan. 8, 15, 22 & 29**  
**10:15–10:45 a.m.**

**No registration is required.** Children must be accompanied by an adult caregiver. Caregivers are expected to participate in activities as able. Groups may contact the Family & Outreach Services Coordinator at (574) 259-5277 ext. 1401 to inquire about special accommodations.



**Inclement Weather Statement:** If both PHM and Mishawaka schools are on a delay or canceled, storytime will be canceled for that day. If only one school system closes, please call the storytime location to verify the event is still being held.

**\*Should the Bittersweet Branch be closed for construction,  
Thursday storytime sessions will be canceled.**





MPHPL encourages families and caregivers to build closeness and early literacy skills with their children by reading 1000 Books Before Kindergarten!

## MILESTONE ACHIEVEMENTS:

### 100 BOOKS

- Hattie C.
- Ma'khi H.
- Rose M.
- Torrence P.
- Graylynn R.
- Eloise
- Lenna
- Nora

### 200 BOOKS

- Lily E.
- Aubree H.
- Nikolai H.
- Adalyn
- Chloe
- Jameson
- John
- Madelyn
- Paulina

### 300 BOOKS

- Gemma J.
- Cash L.
- Josephine P.
- Carson V.
- Grant V.
- Penelope

### 400 BOOKS

- Sophia C.
- Violet C.
- Judah H.
- Nikolai H.
- Edric L.
- Karmen L.
- Jack Joseph M.
- Atlas S.

### 500 BOOKS

- Dean
- Irene
- Jax D.
- Lochlan M.
- Claire W.
- Chloe

### 600 BOOKS

- Rafael E.
- Alexandra G.
- Avery H.
- Caden H.
- Callie H.
- Rose O.
- James P.
- Freya
- Sammy

### 700 BOOKS

- Emmett A.
- Harper B.
- Lottie C.

### 800 BOOKS

- Jacob L.
- Ellie P.
- Trevor P.

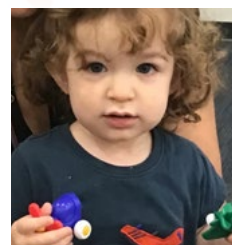
### 900 BOOKS

- Penelope I.
- Brody R.
- Lilliana W.
- Sergio

## 1000 BOOKS!



Olivia L.



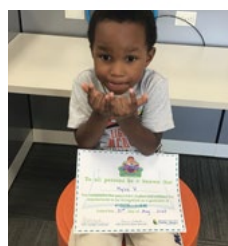
Elliot



Kieran M.



Griffin P.



Myles R.



Noah N.



**ABCmouse®**  
Early Learning Academy

MPHPL cardholders have free access to ABCmouse, an award-winning educational digital resource for children ages 2-8+.



To participate, visit a Youth Services desk or our website

[mphpl.org/1000Books](http://mphpl.org/1000Books)



60

**BOOKS  
BEFORE**

**High  
School**

**MILESTONE  
ACHIEVEMENTS:**

**10 BOOKS**

- Layne

**40 BOOKS**

- Linnea L

This year-round reading program is intended for junior high students in grades 6-8.



To participate, visit a Youth Services desk or [mphpl.org/60Books](http://mphpl.org/60Books)



**Teen Gaming**

**3:30-5:30 p.m. | Grades 6-12**

**Mishawaka Library**

**Tuesdays: December & January  
(no session 12/23 or 12/30)**

Play our Nintendo Switch™ or choose from an assortment of card, dice and board games. Play for a few minutes or join us for the full two hours.

**No registration required**



**TEEN GAMING**

50

**BOOKS  
BEFORE**

**Graduation**

**MILESTONE  
ACHIEVEMENTS:**

**20 BOOKS**

- Natalia B.

This year-round reading program is intended for high school students in grades 9-12.



To participate, visit a Youth Services desk or [mphpl.org/50Books](http://mphpl.org/50Books)





# Homeschool HANGOUT

## Homeschool Hangout

**Mishawaka Library**

**Wednesdays: December 17  
& January 21**

**1-1:45 p.m. | Grades 6-12**

Learn about new topics with hands-on activities. Supplies will be provided. Adult caregivers must remain in the library.

**December 17:** History of the Movies

**January 21:** Antarctica & the Arctic Circle

**Registration required for each session**



## Winter Wonderland Teen Lock-In

**Mishawaka Library**

**Friday, December 19**

**5:30-7:30 p.m. | Grades 6-12**

Our annual winter lock-in is back, filled with pizza, cookies and cocoa. Play trivia and winter-themed games.

Teens must have a signed permission slip on file (or an adult caregiver must sign one on-site).

No admittance after 5:45 p.m.

**Registration required**

## Flavor Feud: M&M's®

**Harris Branch**

**Monday, December 29**

**5-5:45 p.m. | Grades 6-12**

Do your taste buds have what it takes? Identify the most flavors and win a special reward!

M&M's® is a registered trademark of Mars, Inc. Mars, Inc. is not a sponsor of this free event.

**Registration required**

## Teens in the Kitchen

**Mishawaka Library**

**Thursday, January 8**

**5-5:45 p.m. | Grades 6-12**

Learn new kitchen skills and recipes, then sample your delicious creations. Teens must have a signed permission slip on file (or an adult caregiver must sign one on-site).

**Registration is required and limited to MPHPL cardholders.**

## Cupcakes & Canvas

**Harris Branch**

**Saturday, January 17**

**2:30-3:30 p.m. | Grades 6-12**

Create your own scratch art using crayons, paint and soap during a fun afternoon of painting, cupcakes and friends!

**Registration required**



# YOUR GO TO MUSIC SITE



Create your  
own playlists,  
stream songs  
and albums,  
and download  
songs to keep.

**DOWNLOAD  
APP NOW**



  
freegalmusic+



# Borrow eBooks & eAudiobooks for free instantly.

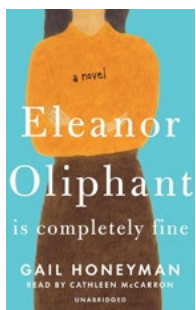


## Libby.

The library reading app







## Saturday–Morning Book Club

**Mishawaka Library**  
**Saturdays: December 6 & January 3**  
**10:15–11:15 a.m.**  
**Adults (18+)**

Join us at our Mishawaka Library to discuss this month's book selection. Books are available a month in advance at the front desk of the Mishawaka Library on a first-come, first-served basis.

**December 6:** *Eleanor Oliphant is Completely Fine*  
by Gail Honeyman

**January 3:** *The Chaperone*  
by Laura Moriarty

**Registration required for each session**



## Access more with your library card

Explore • Learn • Discover



## No-Bake Holiday Treats

**Harris Branch**

**Thursday, December 11**  
**4:30–5:30 p.m. | Adults (18+)**

We will make a delicious no-bake cookie and tasty chocolate oat bar that will impress all your holiday guests.

**Registration is required and limited to MPHPL cardholders.**

## Cooking Classics: Chili Mac & Cheese

**Mishawaka Library**  
**Mondays: December 15**  
**or January 12**  
**4:30–5:30 p.m. | Adults (18+)**

Try your hand at easy culinary creations as we experiment with different flavors and make irresistibly delicious goodies!

**Registration is required and limited to MPHPL cardholders. Please register for either the December or January session.**

[mphpl.org](http://mphpl.org) | 17

**mphpl**

# Get a Digital Card Today!

[mphpl.org/card-info](http://mphpl.org/card-info)



## BINGO

**Bittersweet Branch**

**Wednesdays: December 17  
& January 21**

**5:30–6:30 p.m. | Adults (18+)**

Enjoy an evening of bingo and beverages! Winners will receive small prizes and raffle tickets for a chance to win a door prize.

**Should the Bittersweet Branch be closed for construction, this program will be moved to the Mishawaka Library.**

**Registration required for each session**



## Make With Us: Creative Cricuting

**Harris Branch**

**Saturday, January 17**

**10:30 a.m.–Noon | Adults (18+)**

Experience cozy crafting utilizing the Cricut® machine! Choose a personalized project to beat the winter blues. Perfect for experienced or novice Cricut® users.

Cricut is a registered trademark of Cricut, Inc. Cricut, Inc. is not a sponsor of this free event.

**Registration required**



## Tea Tasting 101

**Harris Branch**

**Monday, January 26**

**10:30–11:30 a.m. | Adults (18+)**

Warm up in the Makerspace as we spill the tea about different blends and yummy pairings.

**Registration required**





# The Smartest Card In Your Wallet



## What do I need for a LIBRARY CARD?

To obtain your Library card you must:

1. Live in Penn or Harris townships, OR have a home Library card from a Library system which is reciprocal with MPHPL\* (some restrictions may apply).
2. Provide required documentation:
  1. a valid photo ID with current address OR
  2. a valid photo ID and proof of current address\*\* if ID address is not current OR
  3. a valid photo ID and a valid resident home Library card for reciprocal applicants.
3. A parent/legal guardian's signature is required for any minor under the age of 18 wishing to register for or renew a Library card.

**Ask us about  
MPHPL Digital Cards!**

\*Non-residents may purchase a fee card. Contact Circulation Services for prices.

\*\*Including but not limited to: utility or phone bill, car registration, etc.

## What can I CHECK OUT?

	Lending Limit	Loan Period
<b>Books &amp; Audiobooks</b>	No Limit	21 days
<b>Magazines &amp; Music CDs</b>	No Limit	21 days
<b>New Release DVDs</b>	3 per card	7 days
<b>Entertainment DVDs</b>	20 per card	7 days
<b>TV Series &amp; Non-Fiction DVDs</b>	20 per card	21 days
<b>Remember to check out our digital resources and Discovery Passes.</b>		

## Renewals:

- All DVDs - No renewals
- All other items - 3 renewals, as long as no one else has placed a hold on the item.
- Eligible items will be automatically renewed 4 days before their due date if there is not a hold on the item. You will receive a courtesy notice if your items have been renewed.

## LOST OR STOLEN CARDS:

If your card has been lost or stolen, please call Circulation Services at any MPHPL location. You are financially responsible for material that is checked out until you report your card lost or stolen.

## Get Reminders Before Materials are Due:

All you need is an email address! Ask about this service at the checkout desk.

## Holds:

Placing a hold is free and available for all materials, excluding new release DVDs.

## Fees & Fines:

- New Release DVDs - \$1 per day
- All other items - 25¢ per day





### MISHAWAKA LIBRARY

209 Lincolnway East  
Mishawaka, IN 46544  
(574) 259-5277

Circulation Desk Ext. 1200  
Reference Services Ext. 1300  
Youth Services Ext. 1400

Monday	9 a.m. - 7 p.m.
Tuesday	9 a.m. - 7 p.m.
Wednesday	9 a.m. - 7 p.m.
Thursday	9 a.m. - 7 p.m.
Friday	9 a.m. - 5 p.m.
Saturday	9 a.m. - 4 p.m.
Sunday	CLOSED



### BITTERSWEET BRANCH

602 Bittersweet Road  
Mishawaka, IN 46544  
(574) 259-5277

Circulation Desk Ext. 2200  
Reference Services Ext. 2300  
Youth Services Ext. 2400

Monday	10 a.m. - 7 p.m.
Tuesday	10 a.m. - 7 p.m.
Wednesday	10 a.m. - 7 p.m.
Thursday	10 a.m. - 7 p.m.
Friday	10 a.m. - 4 p.m.
Saturday	10 a.m. - 4 p.m.
Sunday	CLOSED



### HARRIS BRANCH

51446 Elm Road  
Granger, IN 46530  
(574) 259-5277

Circulation Desk Ext. 3200  
Reference Services Ext. 3300  
Youth Services Ext. 3400

Monday	10 a.m. - 7 p.m.
Tuesday	10 a.m. - 7 p.m.
Wednesday	10 a.m. - 7 p.m.
Thursday	10 a.m. - 7 p.m.
Friday	10 a.m. - 4 p.m.
Saturday	10 a.m. - 4 p.m.
Sunday	CLOSED

# Mark Your Calendar

## Wednesday, Dec. 10

CLOSING at 12:30 p.m. for  
Staff In-Service

## Wednesdays: Dec. 24 & 31

CLOSED for the Holidays

## Thursdays: Dec. 25 & Jan. 1

CLOSED for the Holidays

## Monday, Jan. 19

CLOSED for  
Martin Luther King Jr. Day

## Board Meetings

3<sup>rd</sup> Thursday of each month  
4 p.m. at Mishawaka Library

# Social Media



**Follow Us**

@MPHPL



**Subscribe**

@MPHPL



**Follow Us**

Mishawaka-Penn-Harris Public Library



Use the QR code to register  
from our online event calendar!

# Photo/Video Policy

We often take photographs and video at library events to use in our publications, on our website, social media and/or video sharing platforms.

For registered events, by selecting 'Yes' under Photo and Video Permission, the library assumes that permission has been given. For non-registered events, you will have the option to opt out during the event.

